

OLYMPUS[®]

Your Vision, Our Future

**HD AUTOCLAVABLE
CAMERA HEAD**

VISERA
Pro



*High-Definition for
Surgical Precision*



1080i
HD TV

High Definition Imaging Provides More Accurate Views.



1080i
HDTV



With 1080 effective scanning lines of picture information, the high-definition television camera head delivers picture quality that is more than twice as good as conventional TV. Images are smooth and clear, with reproduction so accurate that details and colors remain sharp and life-like, opening the way to a new era in endoscopy.



Autoclavability

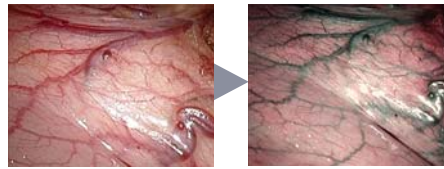


The camera head is tightly sealed preventing lens fogging even after autoclave steam sterilization reprocessing.



Narrow Band Imaging

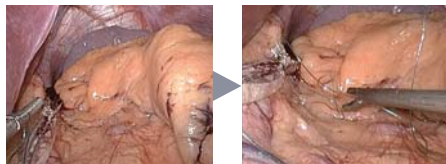
NBI is an optical image enhancement technology that enhances the visibility of vessels and other tissues on the mucosal surface. Narrow-band illumination, which is strongly absorbed by hemoglobin and penetrates only the surface of tissues, is ideal for enhancing the contrast between the two. As a result, under



narrow-band illumination, capillaries on the mucosal surface are displayed in brown and veins in submucosa are displayed in cyan on the monitor.

One Touch Zoom

Enlarge an image to 1.2x, 1.5x.



Normal

1.5x

Remote Control of Frequently Used Functions



On the camera head control section, three switches are built in, allowing programming of frequently used functions such as electronic zoom and image capture for convenient remote control.

Line Up



OTV-S7ProH-HD-12E



OTV-S7ProH-HD-12Q

Specifications

HD AUTOCLAVABLE CAMERA HEAD

OTV-S7ProH-HD-10E 1.0x, Eye-piece type

OTV-S7ProH-HD-10Q 1.0x, Quick-lock type

OTV-S7ProH-HD-12E 1.2x, Eye-piece type

OTV-S7ProH-HD-12Q 1.2x, Quick-lock type

Size	Camera head	OTV-S7ProH-HD-10E/12E: ø41 x 105 mm (from mount surface)
	Cable	OTV-S7ProH-HD-10Q/12Q: ø35 x 124 mm (from mount surface)
Weight	Camera head	OTV-S7ProH-HD-10E/12E: 215 g (excluding cable)
		OTV-S7ProH-HD-10Q/12Q: 215 g (excluding cable)
Observation	Pickup System	Interline type CCD solid-state image pickup
Classification (electro-magnetic equipment)	Degree of protection against electric shock	Type CF
	Degree of protection against explosion	The product should be kept away from flammable gases.
Cleaning/ disinfection sterilization	Cleaning/disinfection	Immersible in disinfectant solution
	Sterilization	Ethylene oxide gas sterilization and steam (autoclavable) sterilization possible

● Number of remote control switches: 3

Specifications, design and accessories are subject to change without any notice or obligation on the part of the manufacturer.

OLYMPUS

www.olympus.com

OLYMPUS MEDICAL SYSTEMS CORP.
Shinjuku Monolith, 3-1 Nishi-Shinjuku 2-chome, Shinjuku-ku, Tokyo 163-0914, Japan
OLYMPUS WINTER & IBE GMBH
Kuehnstrasse 61, 22045 Hamburg, Germany
OLYMPUS MEDICAL SYSTEMS EUROPA GMBH
Postfach 10 49 08, 20034 Hamburg / Wendenstrasse 14-18, 20097 Hamburg, Germany
OLYMPUS SURGICAL & INDUSTRIAL AMERICA INC.
One Corporate Drive, Orangeburg, New York 10962, U.S.A.
OLYMPUS LATIN AMERICA, INC.
5301 Blue Lagoon Drive, Suite 290 Miami, Florida 33126-2097, U.S.A.
OLYMPUS KEYMED GROUP LTD.
Keymed House, Stock Road, Southend-on-Sea, Essex SS2 5QH, England

OLYMPUS SINGAPORE PTE LTD.
491B River Valley Road #12-01/04, Valley Point Office Tower, Singapore 248373
OLYMPUS HONG KONG AND CHINA LIMITED
L43, Office Tower, Langham Place, 8 Argyle Street, Mongkok, Kowloon, Hong Kong
OLYMPUS (BEIJING) SALES & SERVICE CO., LTD.
Room 1202, NCI Tower, A12 Jianguomenwai Avenue Chaoyang District Beijing, 100022, China
OLYMPUS MOSCOW LIMITED LIABILITY COMPANY
117071, Moscow, Malaya Kaizuskaya 19, bld. 1, fl.2, Russia
OLYMPUS AUSTRALIA PTY LTD
31 Gilby Road, Mount Waverley, VIC., 3149, Australia
OLYMPUS KOREA CO., LTD.
4F, 5F, Gyeongnam Bldg., 157-27, Samseong-dong, Gangnam-ku, Seoul, Korea